



www.sabta-lb.com



SabtaInvestment



SabtaInvestment

TO DELIVER IN JULY 2019



Mob. +961 70 333 508
Tel. +961 1 745 996/7
Fax +961 1 745 988
Mail info@sabta-lb.com



SABTA 775





BLOCK A

BLOCK B

BLOCK C

BLOCK D





Sabta 775, in Debbieh, is located roughly :

- 30 Km south of Beirut
- 28km north of Saida
- 6km from nearest beach resorts
- Debbieh is 450m above sea level
- Bordered by the towns of Saadiyat , Dahr Lemghara Bourjein with a breathtaking mountainous views



Beirut Arab University- Debbieh : 3 min
جامعة بيروت العربية - الدبية : ٣ دقائق



Lebanese University- Debbieh : 5 min
الجامعة اللبنانية - الدبية : ٥ دقائق



Beach Resorts- Damour : 8 min
المنتجعات البحرية - الدامور : ٨ دقائق

THE LOCATION

25MIN FROM BEIRUT

يقع مشروع ٧٧٥ في الدبية والتي تبعد

- ٣٠ كلم جنوب مدينة بيروت
- ٢٨ كلم شمال مدينة صيدا
- ٦ كلم عن المنتجعات البحرية
- ترتفع بلدة الدبية ٤٥٠ مترا عن سطح البحر
- تحدها كل من بلدتي السعديات و ضهر المغارة من الشرق والجنوب، بلدة البرجين من الغرب والشمال

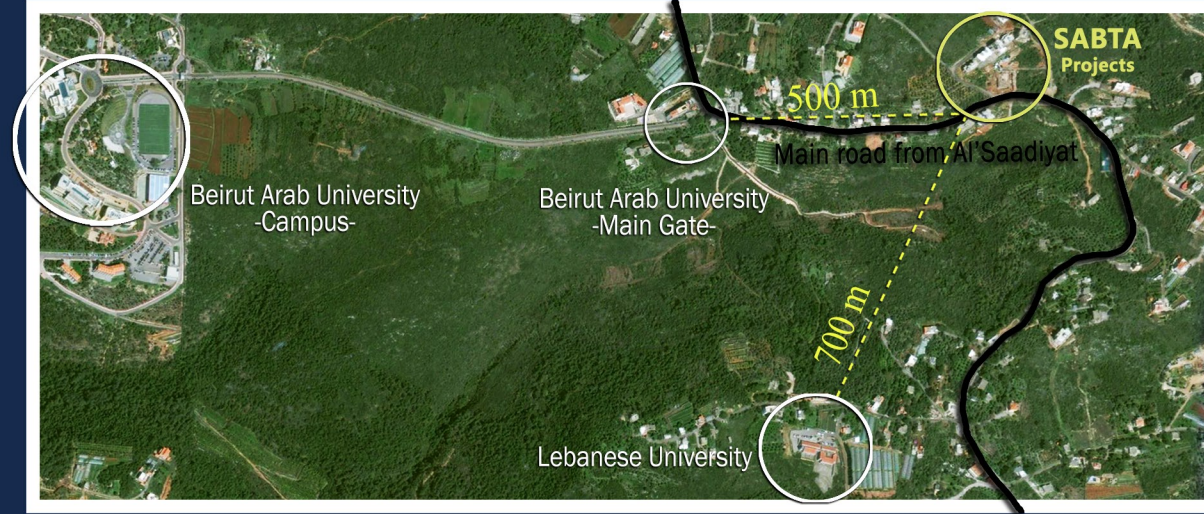




SABTA projects are located with 25 minutes' drive from Beirut, in a peaceful surrounding overlooking mountainous view.

Near all the facilities set to be :

- 3mins from Beirut Arab University
- 5mins from Lebanese university



THE LOCATION

مشاريع سبتا بتصاميمها الحديثة مؤلفة من ٤ طوابق و تتميز:

- بوقوعها على الطريق العام
- بقربها من الجامعة العربية والجامعة اللبنانية في منطقة الدبية
- باطلالتها على الجبل بحيث تجعل منها بيئة مثالية لحياة هادئة.



SABTA 775



PROJECT'S INTRODUCTION



PROJECT'S BRIEF



Our residential units boasts in :

- 24 Apartments
- 4 Floors
- 4 Blocks
- 4 Parking Entrances

يتألف المشروع من :
• ٢٤ شقة سكنية
• ٤ طوابق
• ٤ بلوكات
• ٤ مداخل لمواقف السيارات

SABTA 775



PROJECT'S FLOOR PLAN



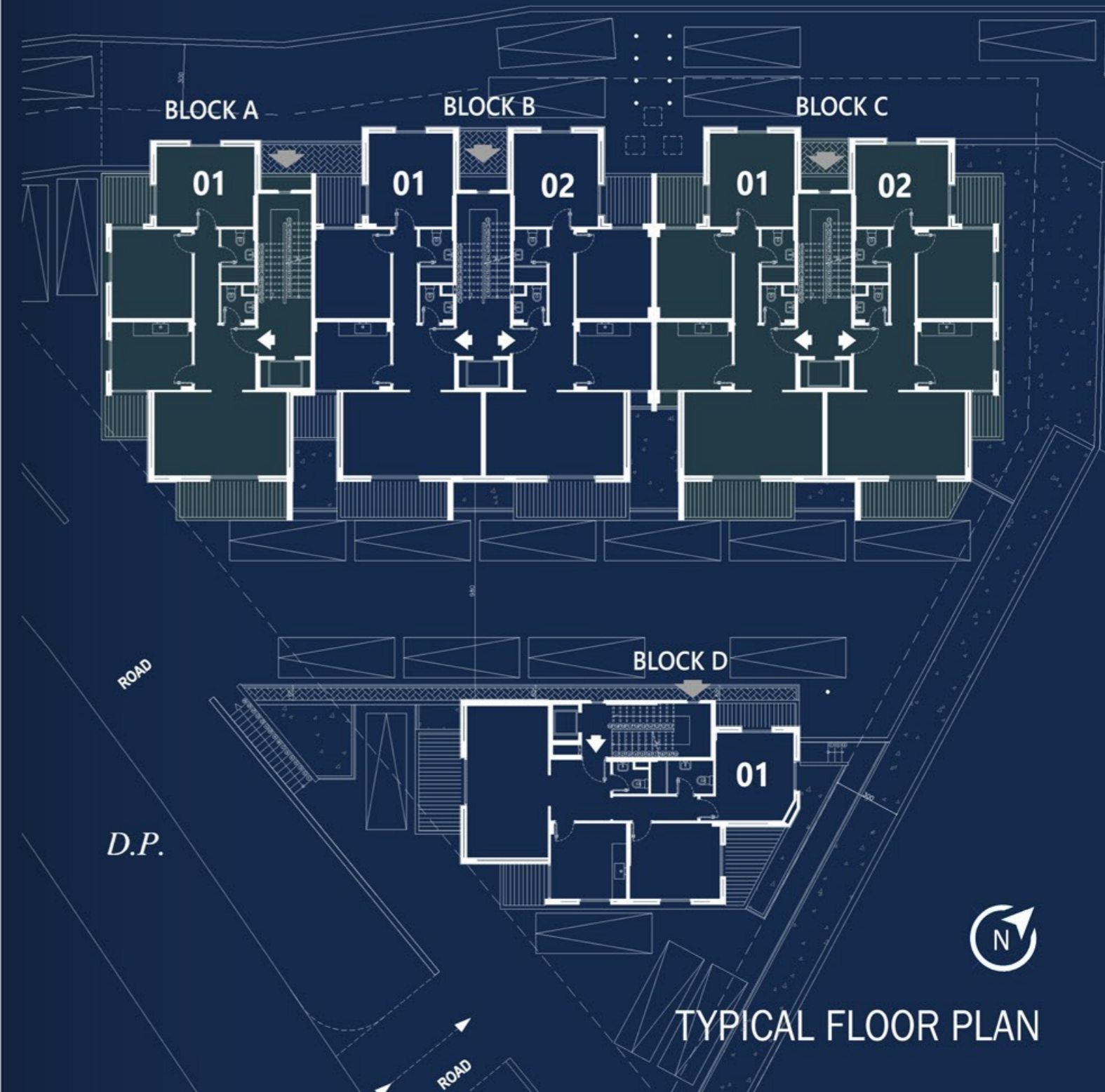
- Each block holds in a total of 4 floors
- Each floor combines a different set of apartments from 1 Apartment/floor, to 2 Apartments/floor

- تتوزع الشقق في البلوك الواحد على ٤ طوابق
- يشمل الطابق شقة واحدة كما في بلوك [A و D] أو شقتين كما في [B و C]

APARTMENTS AREAS TYPICAL FLOOR

Block A	Apartment 01	2 Bedrooms	145m ²
Block B	Apartment 01	2 Bedrooms	126m ²
Block B	Apartment 02	2 Bedrooms	123m ²
Block C	Apartment 01	2 Bedrooms	123m ²
Block C	Apartment 02	2 Bedrooms	126m ²
Block D	Apartment 01	2 Bedrooms	147m ²

SABTA
775



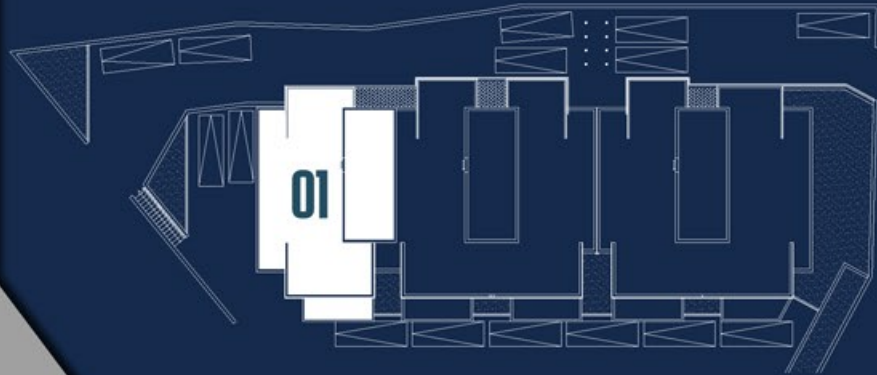
TYPICAL FLOOR PLAN

UNIT'S DETAILS



SABTA 775

Apartment 01 - Block | A [TYPICAL FLOOR]



Apartment 01 - Block A boasts 2 bedrooms and a spacious open-plan living area to a balcony with mountainous view

145 sqm

Lobby	2.7 x 2.9 m
Salon & Dining	5.9 x 3.7 m
Balcony	4.8 x 1.6m
Guest Bathroom	1.5 x 1.7 m
Kitchen	3.6 x 3.0 m
Bedroom 1	3.6 x 4.0 m
Bedroom 2	4.4 x 3.6 m
Main Bathroom	1.5 x 2.4 m

Apartment Area 145 m²

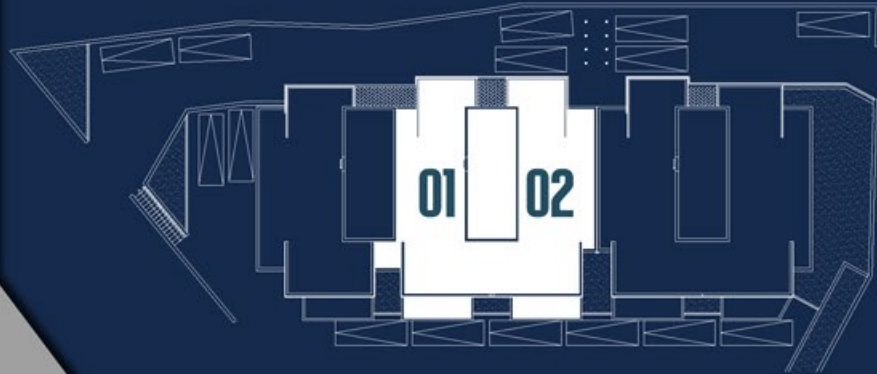


UNIT'S DETAILS



**SABTA
775**

Apartment 01&02 - Block | B [TYPICAL FLOOR]



Apartments 01&02 - Block B each boasts 2 bedrooms & a spacious open-plan living area to a balcony with mountainous view

Lobby	2.7 x 2.9 m	2.7 x 2.9 m
Salon & Dining	6.2 x 3.7 m	6.2 x 3.7 m
Balcony	4.9 x 1.6 m	4.7 x 1.6 m
Guest Bathroom	1.5 x 1.7 m	1.5 x 1.7 m
Kitchen	3.4 x 3.0 m	3.4 x 3.0 m
Bedroom 1	3.4 x 4.0 m	3.4 x 4.0 m
Bedroom 2	3.8 x 4.2 m	3.8 x 4.2 m
Main Bathroom	1.5 x 2.4 m	1.5 x 2.4 m

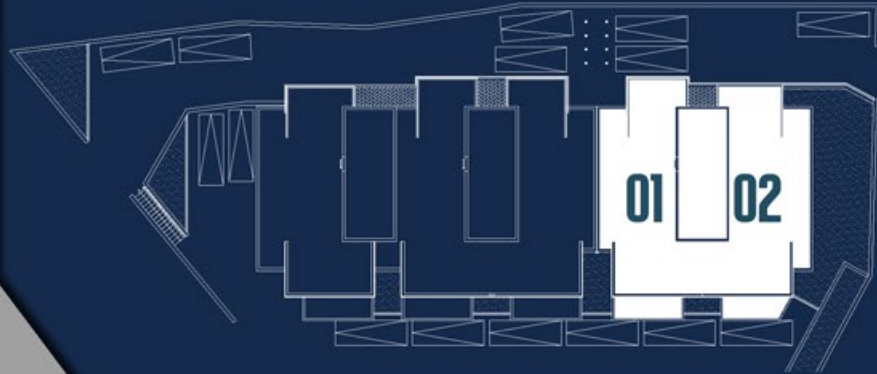
Apartment Area	126 m²	123 m²
	01	02



UNIT'S DETAILS



Apartment 01&02 - Block | C [TYPICAL FLOOR]



Apartments 01&02 - Block C each boasts 2 bedrooms & a spacious open-plan living area to a balcony with mountainous view

Lobby	2.7 x 2.9 m	2.7 x 2.9 m
Salon & Dining	6.2 x 3.7 m	6.2 x 3.7 m
Balcony	4.9 x 1.6 m	4.9 x 1.6 m
Guest Bathroom	1.5 x 1.7 m	1.5 x 1.7 m
Kitchen	3.4 x 3.0 m	3.4 x 3.0 m
Bedroom 1	3.4 x 4.0 m	3.4 x 4.0 m
Bedroom 2	3.8 x 4.2 m	4.2 x 3.7 m
Main Bathroom	1.5 x 2.4 m	1.5 x 2.4 m

Apartment Area	123 m²	126 m²
	01	02

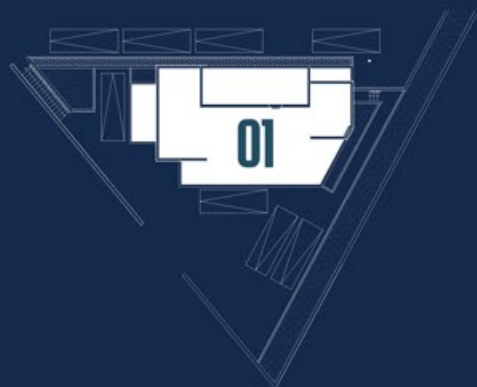


SABTA 775

UNIT'S DETAILS



Apartment 01 - Block | D [TYPICAL FLOOR]



Apartment 01 - Block D boasts 2 bedrooms and a spacious open-plan living area to a balcony with mountainous view

147 sqm

Lobby	2.7 x 2.7 m
Salon & Dining	6.8 x 3.6 m
Balcony	1.9 x 4.4 m
Guest Bathroom	1.6 x 1.4 m
Kitchen	3.4 x 3.4 m
Bedroom 1	4.0 x 3.4 m
Bedroom 2	3.5 x 3.9 m
Main Bathroom	2.8 x 1.5 m

Apartment Area 147 m²

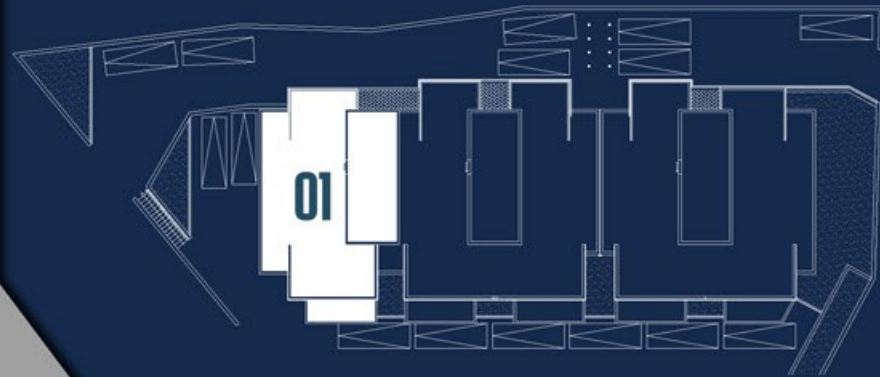


SABTA
775

UNIT'S DETAILS



Apartment 01 - Block | A [BASEMENT FLOOR]



Apartment 01 - Block A boasts 2 bedrooms and a spacious open-plan living area to a balcony with mountainous view

136 sqm

Lobby	2.7 x 2.9 m
Salon & Dining	5.9 x 3.7 m
Balcony	4.9 x 1.2 m
Guest Bathroom	1.5 x 1.7 m
Kitchen	3.6 x 3.0 m
Bedroom 1	3.6 x 4.0 m
Bedroom 2	4.4 x 3.6 m
Main Bathroom	1.5 x 2.4 m

Apartment Area 136 m²

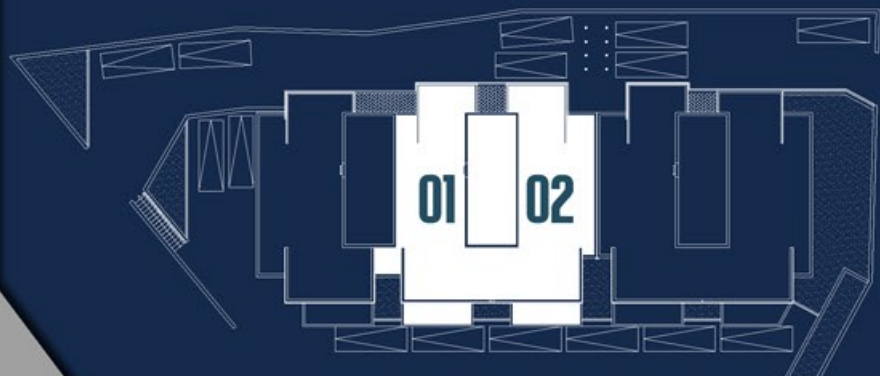


**SABTA
775**

UNIT'S DETAILS



Apartment 01&02 - Block | B [BASEMENT FLOOR]



Apartments 01&02 - Block B each boasts 2 bedrooms & a spacious open-plan living area to a balcony with mountainous view

Lobby	2.7 x 2.0 m	2.7 x 2.0 m
Salon & Dining	3.9 x 3.7 m	3.9 x 3.7 m
Balcony	4.9 x 1.2 m	4.9 x 1.2 m
Guest Bathroom	1.5 x 1.7 m	1.5 x 1.7 m
Kitchen	2.2 x 3.7 m	2.2 x 3.7 m
Bedroom 1	3.4 x 4.7 m	3.4 x 4.7 m
LivingRoom	3.3 x 2.4 m	3.3 x 2.4 m
Bedroom 2	3.8 x 4.2 m	3.8 x 4.2 m
Main Bathroom	1.5 x 2.4 m	1.5 x 2.4 m

Apartment Area	117 m²	114 m²
	01	02

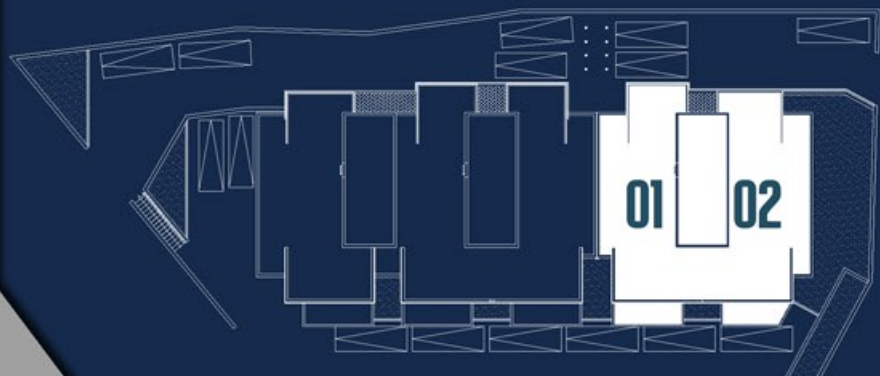
SABTA 775



UNIT'S DETAILS



Apartment 01&02 - Block | C [BASEMENT FLOOR]



Apartments 01&02 - Block C each boasts 2 bedrooms & a spacious open-plan living area to a balcony with mountainous view

Lobby	2.7 x 2.0 m	2.7 x 2.9 m
Salon & Dining	3.9 x 3.7 m	6.2 x 3.7 m
Balcony	4.9 x 1.2 m	5.0 x 1.2 m
Guest Bathroom	1.5 x 1.7 m	1.5 x 1.7 m
Kitchen	2.2 x 3.7 m	3.4 x 3.0 m
Bedroom 1	3.4 x 4.7 m	3.4 x 4.0 m
LivingRoom	3.3 x 2.4 m	-
Bedroom 2	3.8 x 3.8 m	4.2 x 3.8 m
Main Bathroom	1.5 x 2.4 m	1.5 x 2.4 m

Apartment Area	113 m²	121 m²
	01	02

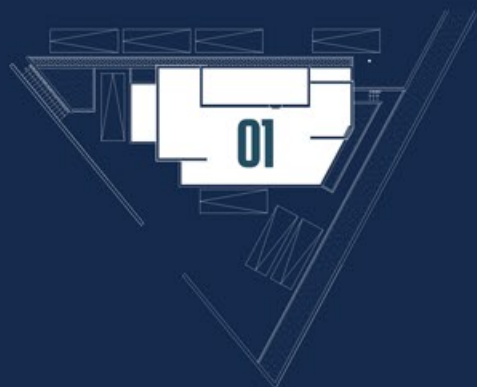


SABTA 775

UNIT'S DETAILS



Apartment 01 - Block | D [BASEMENT FLOOR]



Apartment 01 - Block D boasts 2 bedrooms and a spacious open-plan living area to a balcony with mountainous view

138 sqm

Lobby	2.7 x 2.7 m
Salon & Dining	6.8 x 3.6 m
Balcony	1.9 x 4.4 m
Guest Bathroom	1.6 x 1.4 m
Kitchen	3.4 x 3.4 m
Bedroom 1	4.0 x 3.4 m
Bedroom 2	3.5 x 3.9 m
Main Bathroom	2.8 x 1.5 m

Apartment Area 138 m²



SABTA 775



“ Luxury you can afford . . . Quality you can trust ”



Stay tuned for our latest updates on projects

